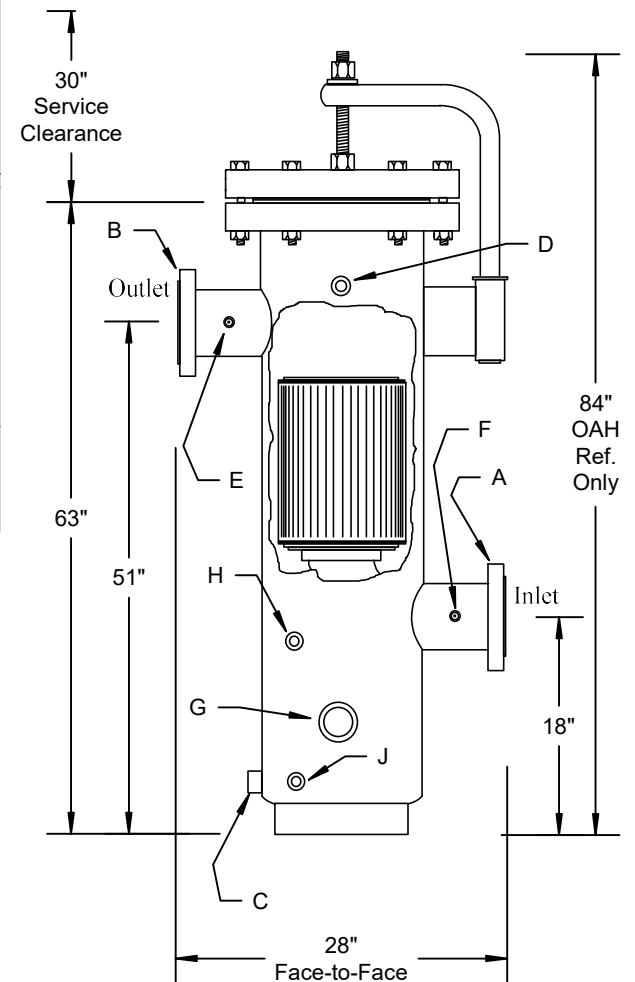
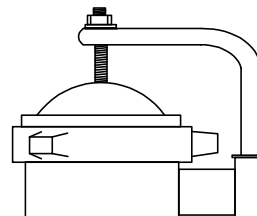


VESSEL DATA SHEET

Design Parameters		Schedule of Openings					
Pressure, Max. at Inlet	740 psi	Service	See Dwg.	Qty.	Size	Rating	Type
Temperature	100 F	Inlet	A	1	8"	300# ANSI	Flange
Corrosion Allow.	0.00"	Outlet	B	1	8"	300# ANSI	Flange
Code Standard	ASME Sect. VIII, Div. 1	Drain	C	1	1"	3000#	Coupling
Stamped?	Optional	Vent	D	1	1"	3000#	Coupling
Operating Parameters		Press. Tap	E	1	1/4"	3000#	Coupling
Pressure, Max.	740 psi	Press. Tap	F	1	1/4"	3000#	Coupling
Temperature	100 F	Float Switch	G	1	2"	3000#	Coupling
Gas Flow Rate	4,100,000 scfh @ 740 psi	Sight Glass	H	1	1/2"	3000#	Coupling
Gas Specific Gravity	0.60	Sight Glass	J	1	1/2"	3000#	Coupling
Vessel Testing		Materials of Construction					
Hydrotest Pressure	1,110 psi	Shell	SA53B		Thickness		
Pneumatic Test Pressure	N/A	Bottom Head	SA234WPB		0.375"		
Radiograph	Optional with U-Stamp	In/Out Piping	SA53B		0.500"		
Magnetic Particle	Optional with U-Stamp	Flanges	SA105		ANSI 300#		
Dye Penetrant	Optional with U-Stamp	Couplings	SA105		3000#		
Filtration Performance		Closure Gasket	Spiral Wound Gasket		0.188"		
Filter Element P/N	#2054K907	Shipping Information					
Type of Filter Media	Borosilicate Fiberglass	Total Weight	900#				
Retention Rating	0.3 micron						
Efficiency of Retention	99.9%						
No. of Elements	1						
Design Clean Press. Drop	0.33 psid						
Changeout Press. Drop	10 psid						
Closure Specifications							
Type	Blind Flange						
Gasket Type	Fiber Type, #16-300SW						
Type of Lifting Assistance	Hinge/Handle						
Internal Finish							
Sandblast	Light						
Oil Coat	None						
Glyptol Coat	None						
External Finish							
Sandblast	SP-10 Commercial						
Finish Coat	(2) Coats PPG Grey Enamel Primer/Finish						
Sump Capacity	14 gallons						



Optional Threaded
Quick Opening
Modco Closure



FilterFab
MANUFACTURING CORPORATION

Model C8-740F Coalescing Filter